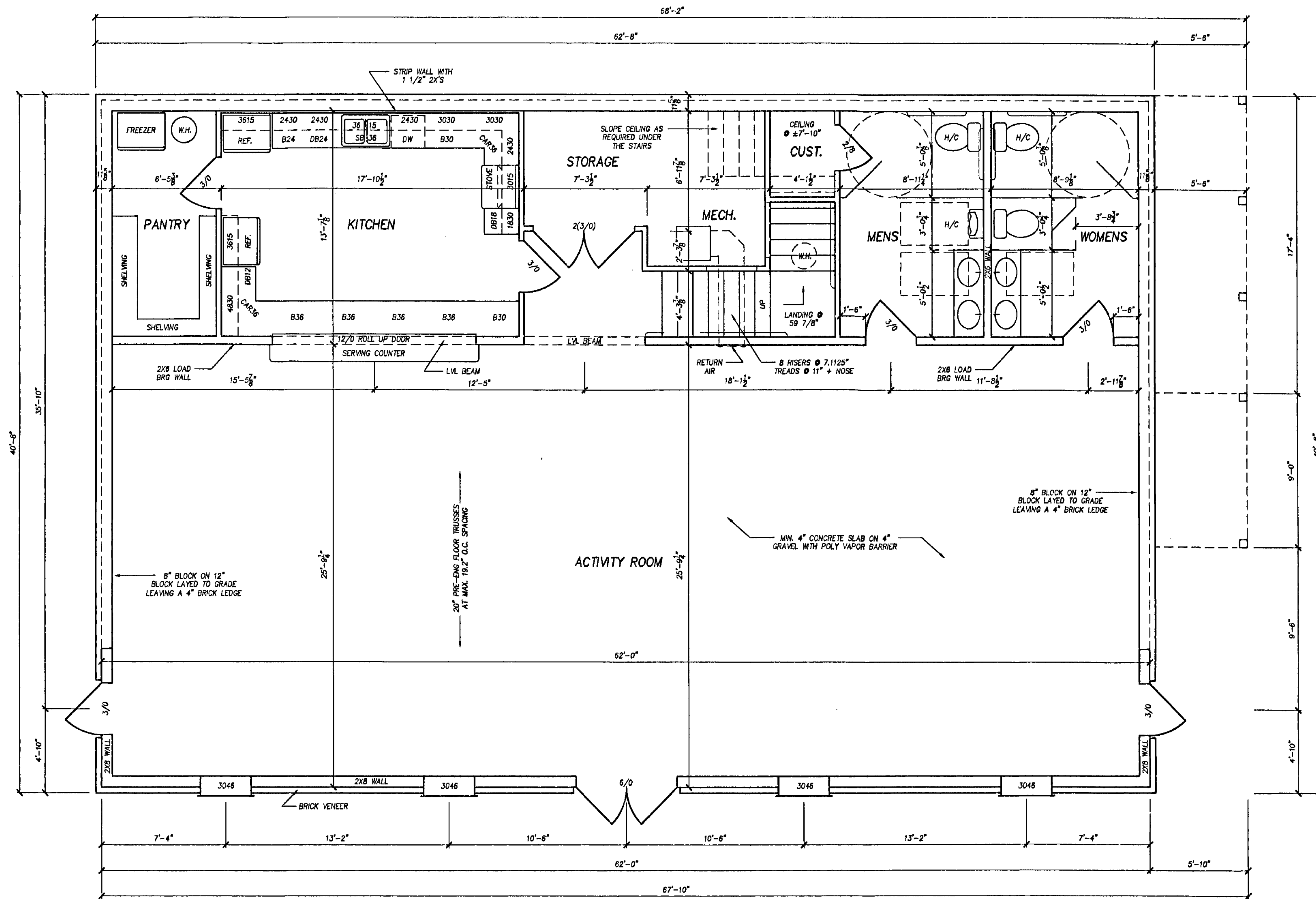


BATHROOM ACCESSIBILITY NOTES

- WATER CLOSET HEIGHT 17" - 19" TO THE TOP OF THE TOILET SEAT.
- FLUSH CONTROLS TO BE HAND OPERATED MOUNTED ON THE WIDE SIDE OF THE TANK.
- TOILET PAPER DISPENSERS IN REACH AND A MINIMUM HEIGHT OF 19"
- REAR GRAB BAR TO EXTEND A MINIMUM OF 36" FROM THE SIDE WALL. A 42" MINIMUM LENGTH BAR ON THE SIDE SPACED 12" MAXIMUM FROM THE REAR WALL AND EXTENDING A MINIMUM OF 54 INCHES FROM THE BACK WALL. GRAB BAR HEIGHT TO BE 33" - 36".
- URINALS TO HAVE AN ELONGATED RIM AT A MAXIMUM OF 17" ABOVE THE FLOOR.
- LAVATORIES MOUNTED WITH THE RIM OR COUNTER SURFACE NO HIGHER THAN 34" WITH 29" KNEE CLEARANCE TO THE BOTTOM. PIPES NOT TO BE EXPOSED OR INSULATED TO PROTECT AGAINST CONTACT. 30"X48" CLEAR FLOOR SPACE.
- FAUCETS TO BE LEVER, PUSH-TYPE OR AUTOMATICALLY CONTROLLED.
- DRINKING FOUNTAINS SPOUTS TO BE AT THE FRONT AND NO MORE THAN 36" HIGH.
- DOORS TO HAVE LEVER HARDWARE AND CLOSE AUTOMATICALLY.

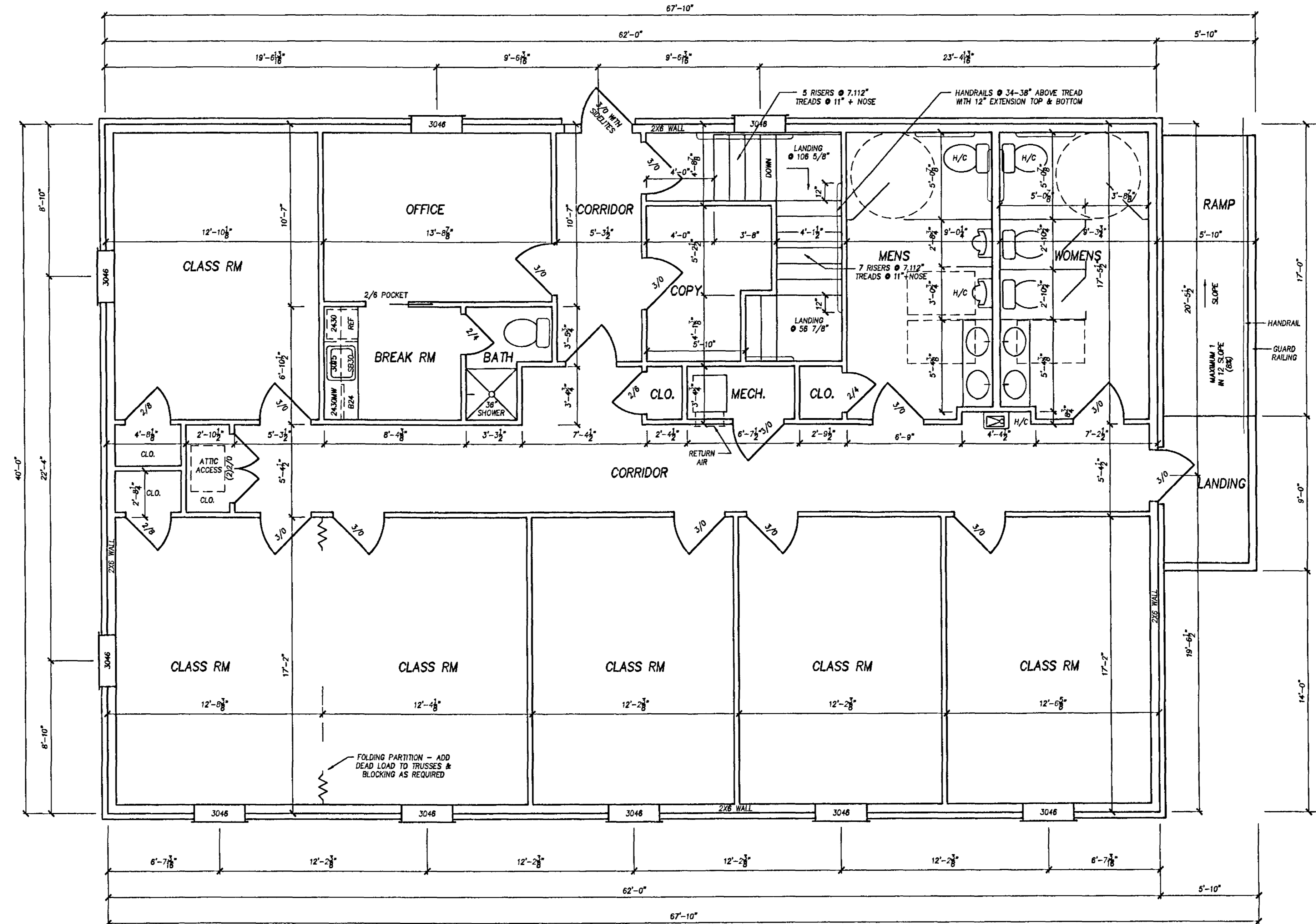


BASEMENT PLAN

1 / 4" = 1' - 0"

BATHROOM ACCESSIBILITY NOTES

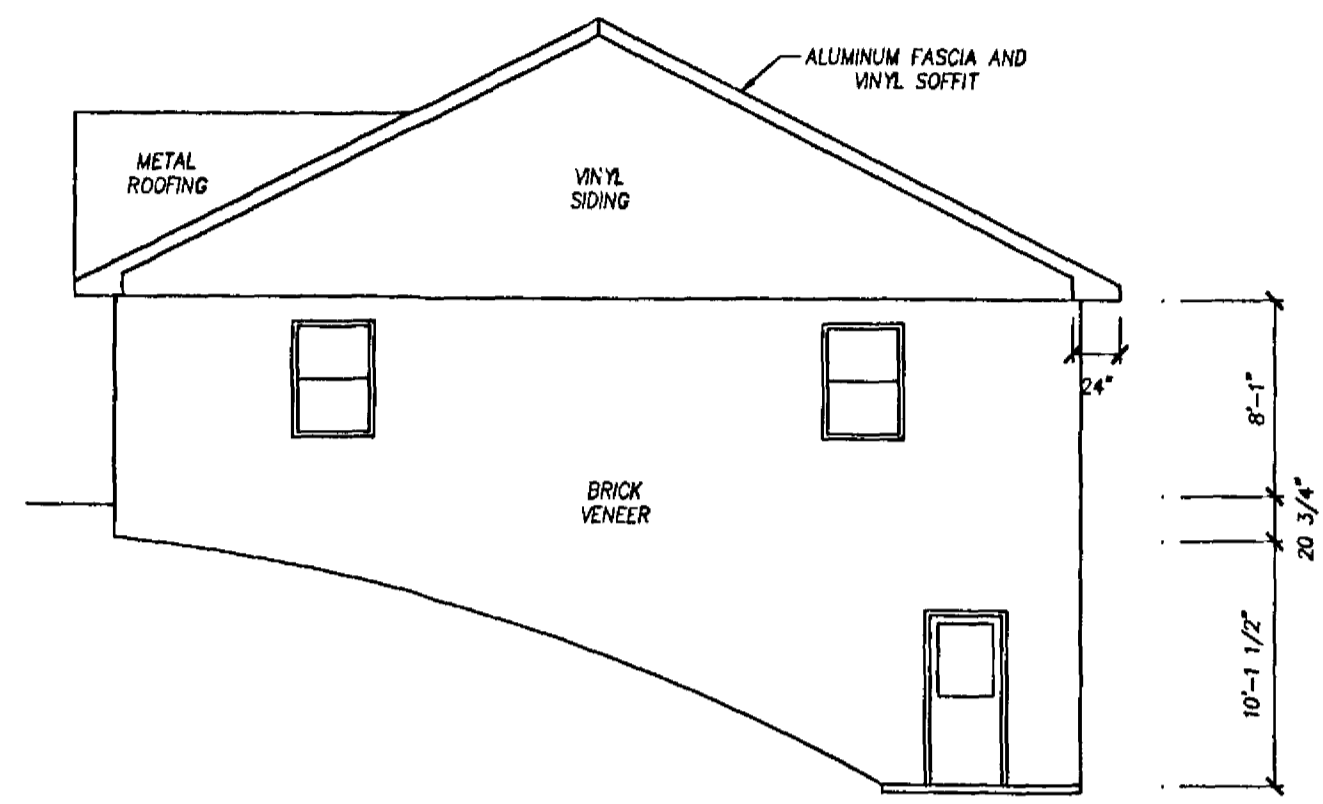
- WATER CLOSET HEIGHT 17" - 19" TO THE TOP OF THE TOILET SEAT.
- FLUSH CONTROLS TO BE HAND OPERATED MOUNTED ON THE WIDE SIDE OF THE TANK.
- TOILET PAPER DISPENSERS IN REACH AND A MINIMUM HEIGHT OF 19"
- REAR GRAB BAR TO EXTEND A MINIMUM OF 36" FROM THE SIDE WALL, A 42" MINIMUM LENGTH BAR ON THE SIDE SPACED 12" MAXIMUM FROM THE REAR WALL AND EXTENDING A MINIMUM OF 54 INCHES FROM THE BACK WALL. GRAB BAR HEIGHT TO BE 33" - 36".
- URINALS TO HAVE AN ELONGATED RIM AT A MAXIMUM OF 17" ABOVE THE FLOOR.
- LAVATORIES MOUNTED WITH THE RIM OR COUNTER SURFACE NO HIGHER THAN 34" WITH 28" KNEE CLEARANCE TO THE BOTTOM. PIPES NOT TO BE EXPOSED OR INSULATED TO PROTECT AGAINST CONTACT. 30"x48" CLEAR FLOOR SPACE.
- FAUCETS TO BE LEVER, PUSH-TYPE OR AUTOMATICALLY CONTROLLED.
- DRINKING FOUNTAINS SPOUTS TO BE AT THE FRONT AND NO MORE THAN 36" HIGH.
- DOORS TO HAVE LEVER HARDWARE AND CLOSE AUTOMATICALLY.



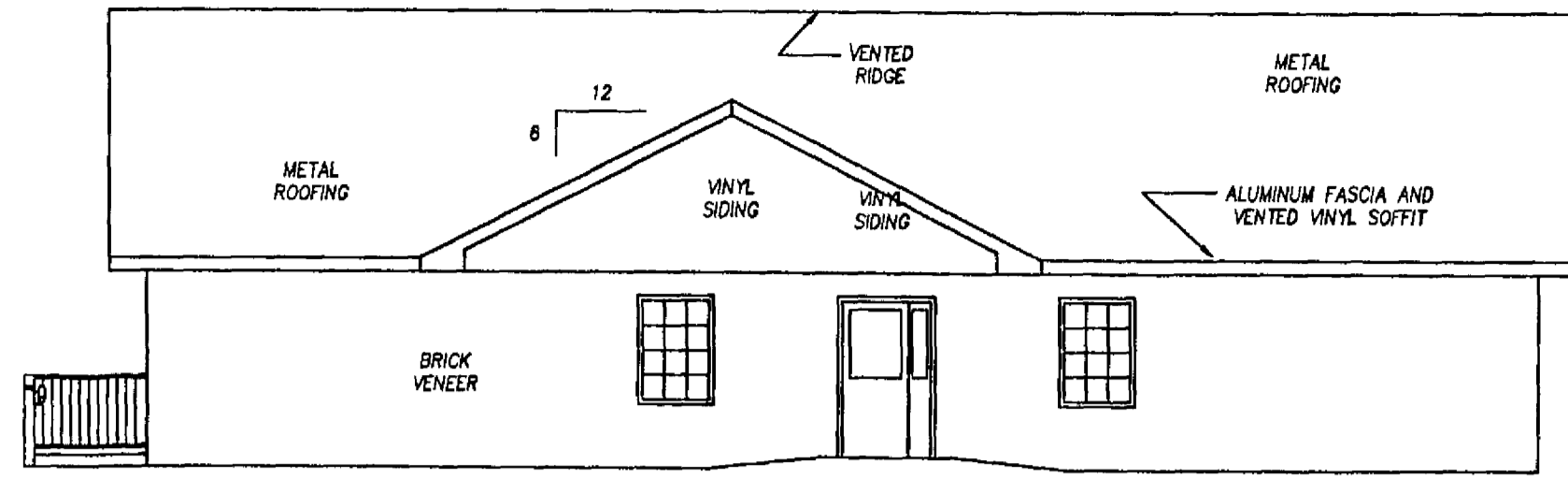
MAIN FLOOR PLAN

1 / 4" = 1' - 0"

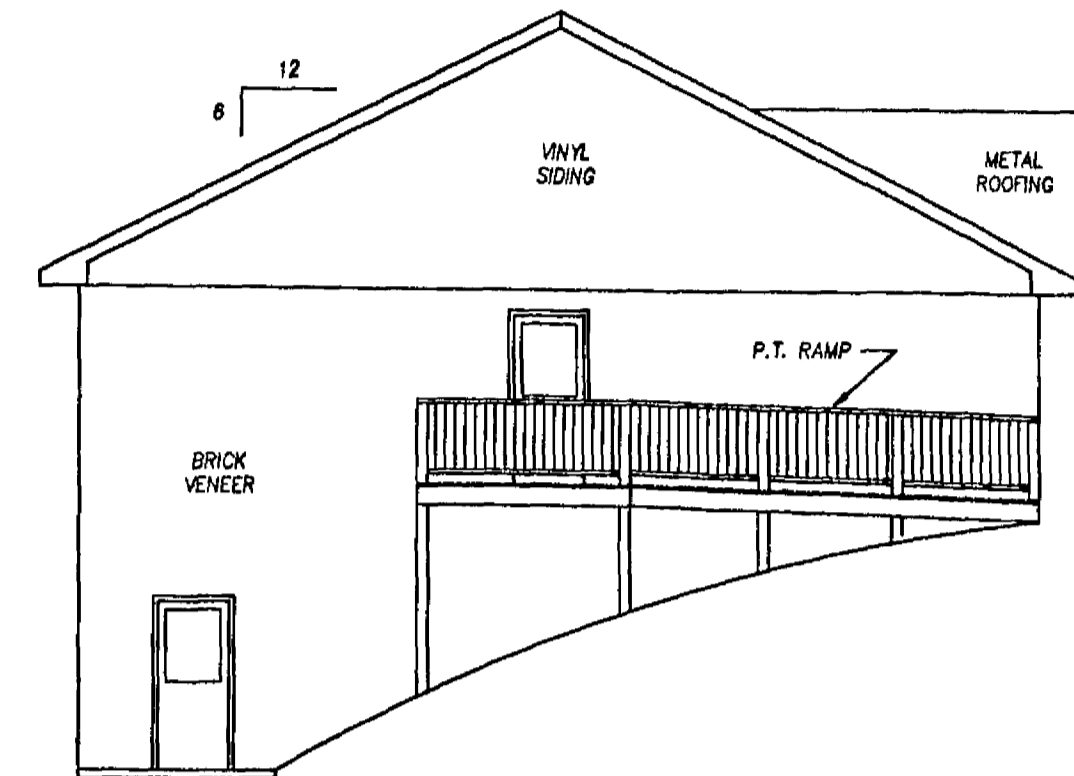
AREA
 2480 SQ.FT. MAIN FLOOR
 2480 SQ.FT. BASEMENT FLOOR
 49 SQ.FT. LANDING
 +90 SQ.FT. RAMP



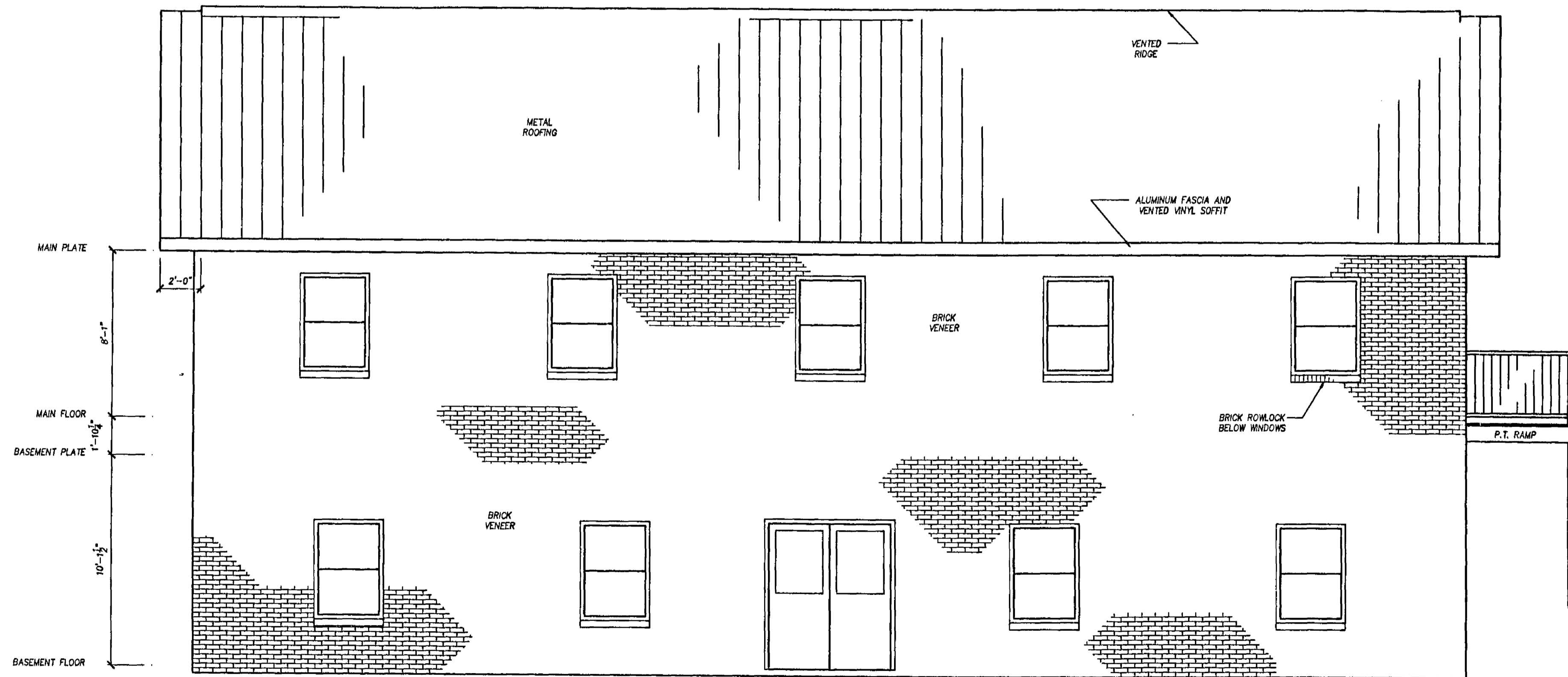
LEFT VIEW
1/8" = 1' - 0"



REAR VIEW
1/8" = 1' - 0"

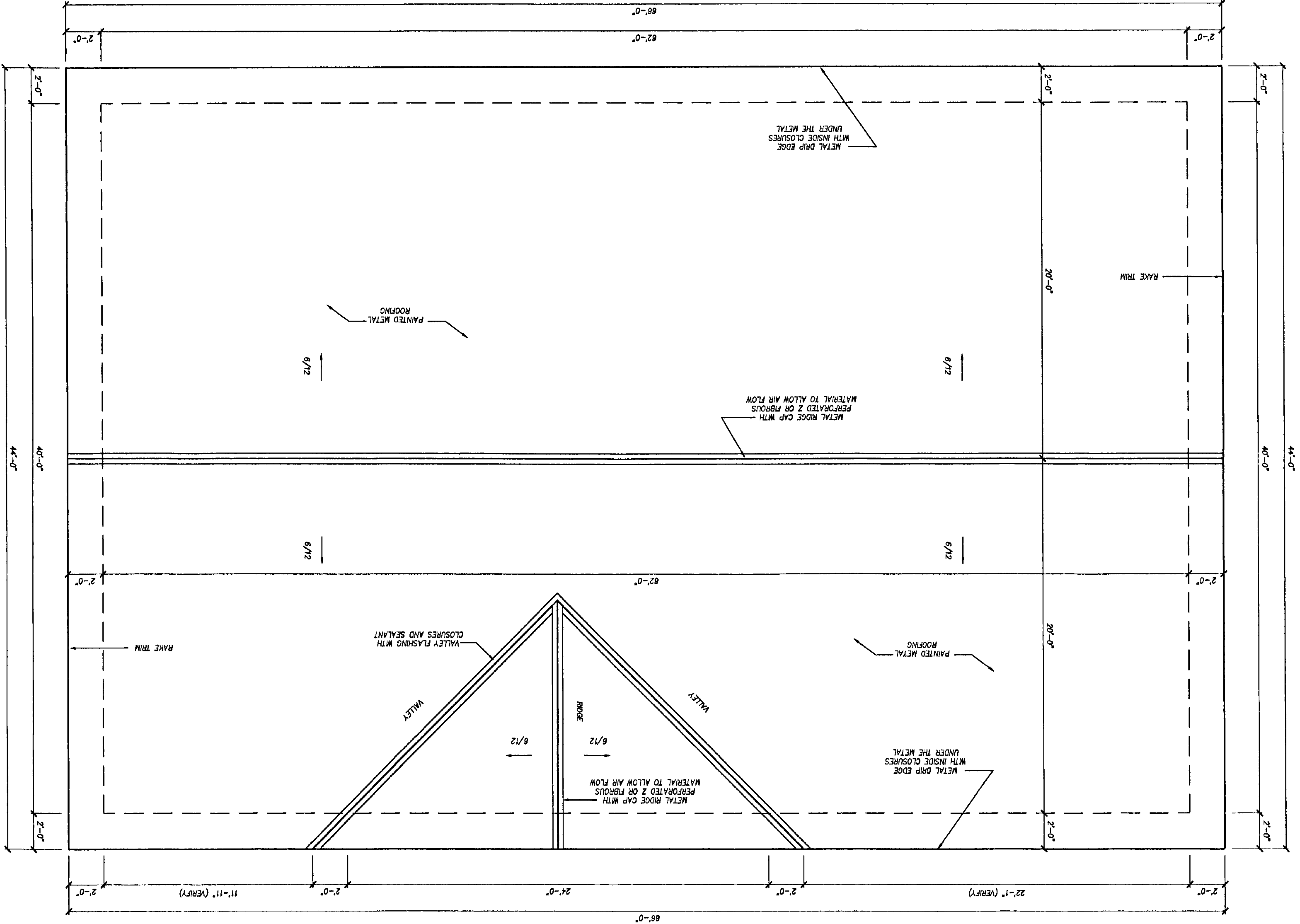


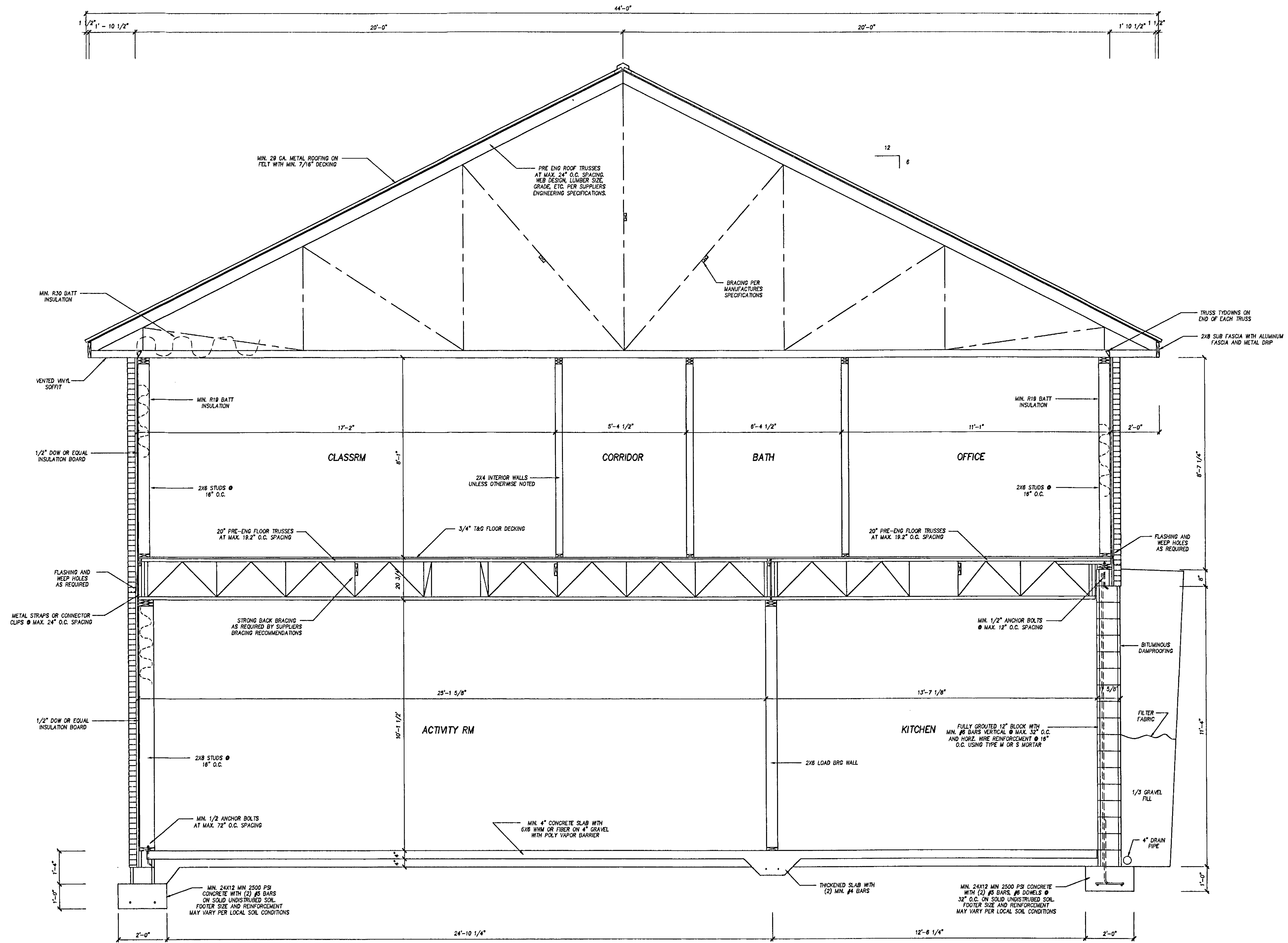
RIGHT VIEW
1/8" = 1' - 0"



FRONT VIEW
1/8" = 1' - 0"

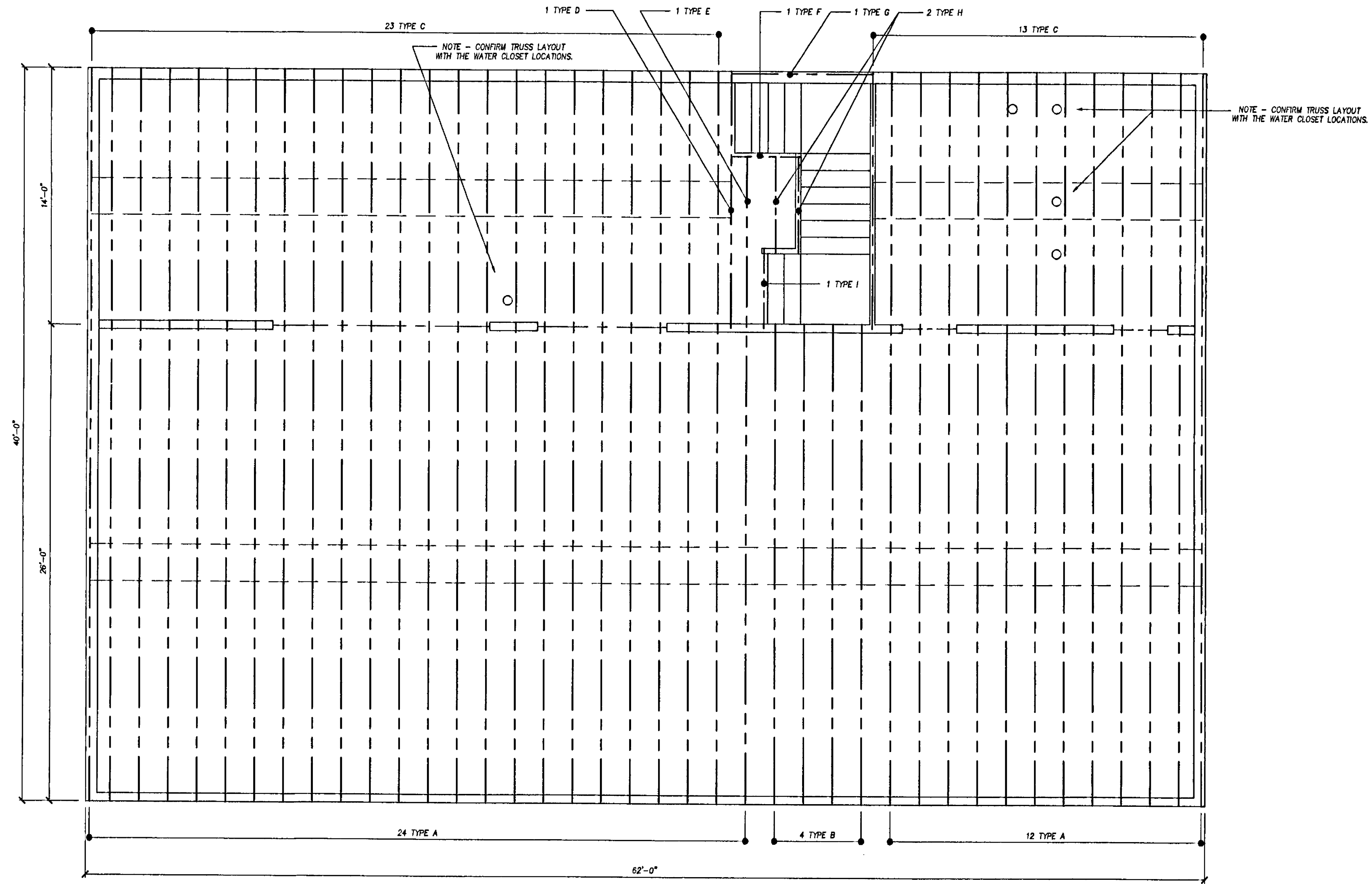
ROOF PLAN
 1/4" = 1'-0"





TYPICAL BUILDING SECTION

1/2" = 1' - 0"

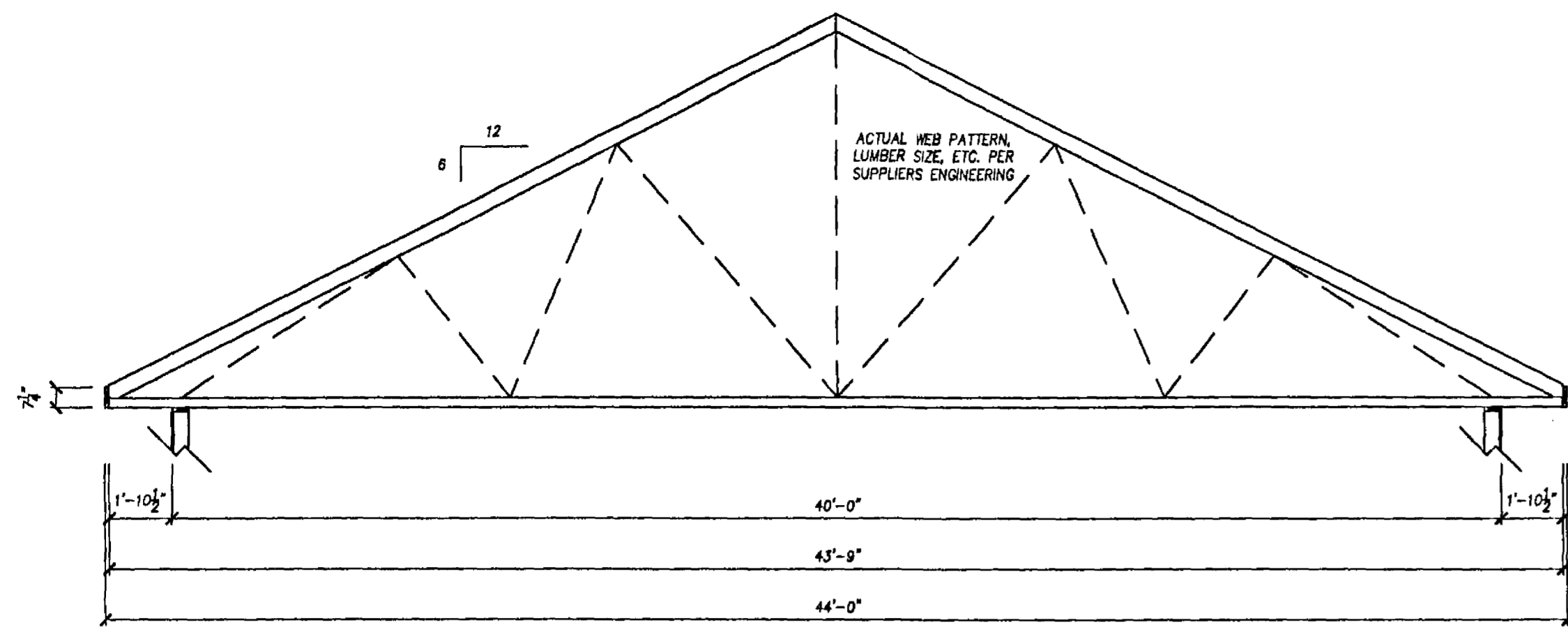


FLOOR TRUSS PLAN
1/4" = 1' - 0"

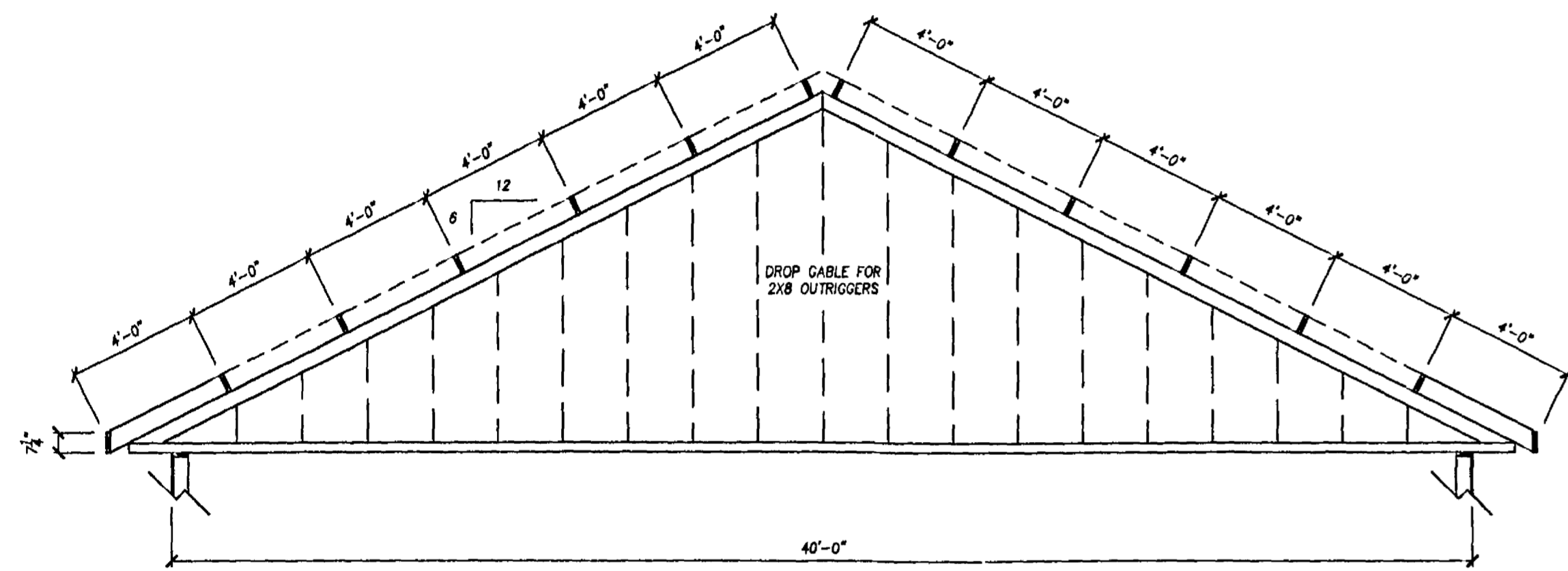
FLOOR TRUSS NOTES

- MAXIMUM 19 2" O.C. SPACING.
- 20" DEPTH (SUPPLIER TO SPECIFY LUMBER GRADE AND PLATE SIZES).
- DEFLECTION LIMIT = L/360.
- LOADING
 - CLASSROOMS - 40+10+5=55 LBS/SQFT WITH 1000 LBS CONCENTRATED.
 - OFFICES - 50+10+5=65 LBS/SQFT WITH 2000 LBS CONCENTRATED.
 - CORRIDORS - 80+10+5=95 LBS/SQFT WITH 1000 LBS CONCENTRATED.
- STRONGBACK BRACING AS REQUIRED BY ENGINEERING SPECIFICATIONS.
- USE HANGERS TO ATTACH TRUSSES TO HEADERS OR GIRDERS.

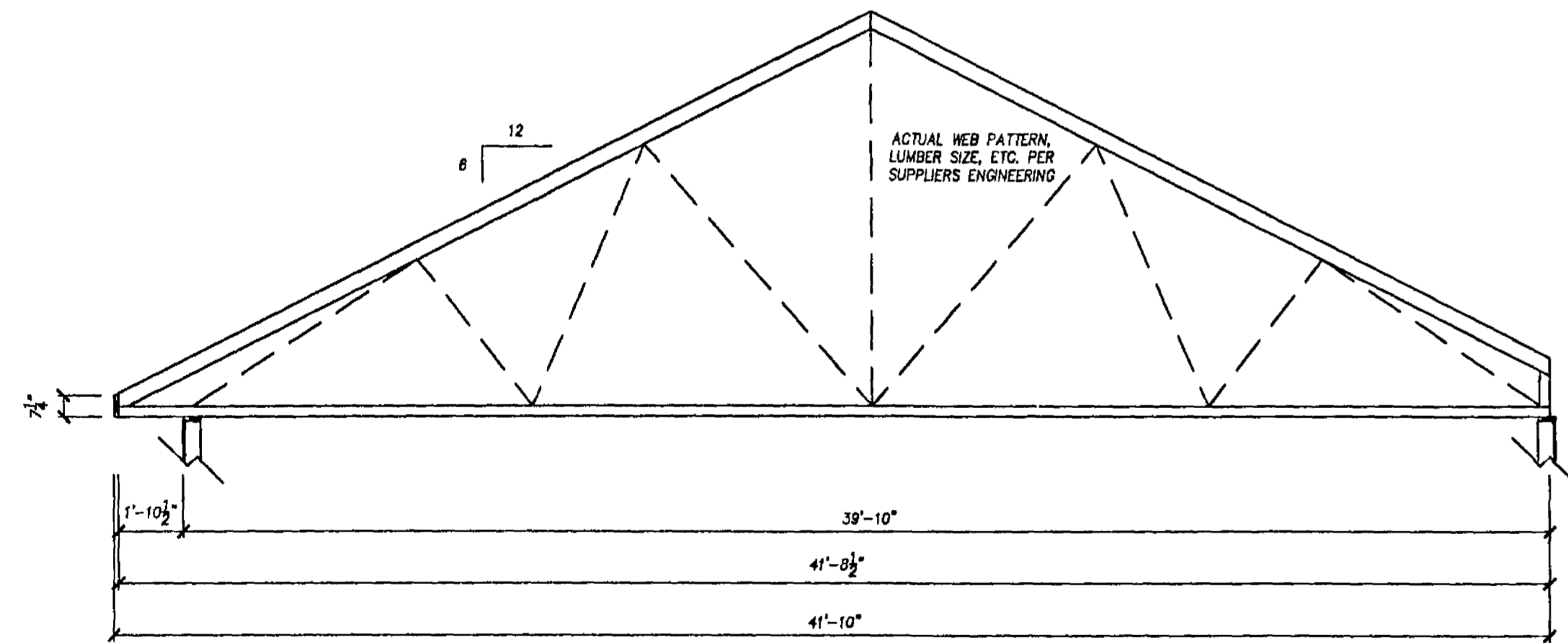
FLOOR TRUSSES			
QTY	MARK	LENGTH	NOTE
36	A	25-11-8	
4	B	25-2-4	
36	C	13-11-8	
1	D	13-11-8	GIRDER TRUSS
1	E	9-3-0	
1	F	3-8-0	HEADER TRUSS
1	G	7-8-0	
2	H	5-2-8	
1	I	4-4-12	



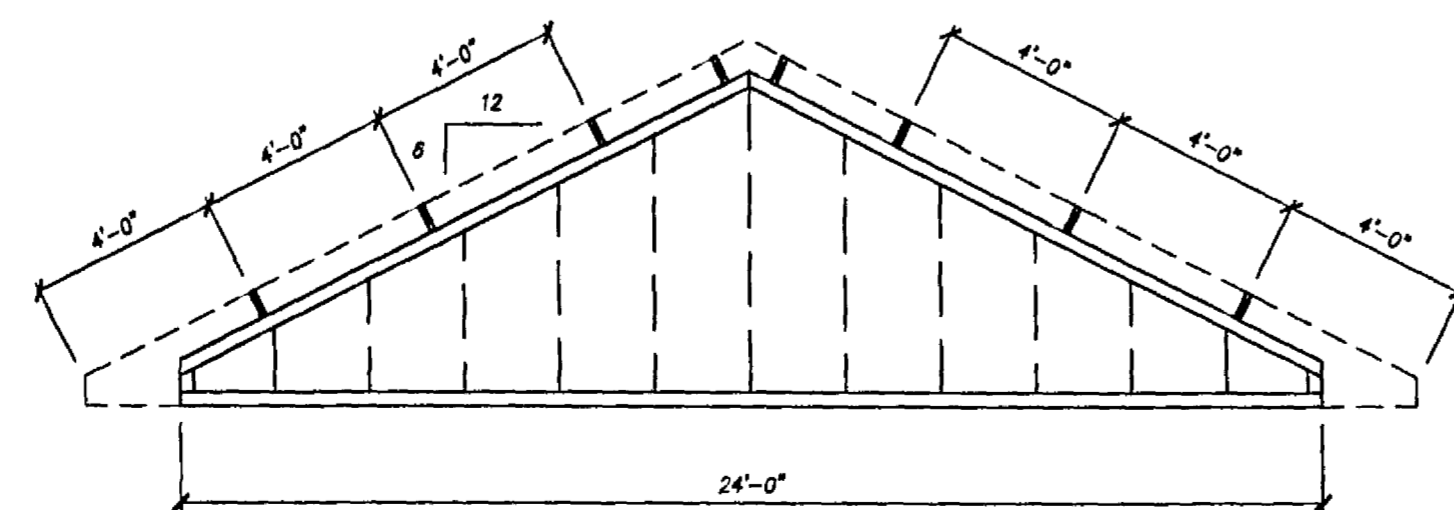
TRUSS "A"
1 / 4" = 1' - 0"



TRUSS "B"
1 / 4" = 1' - 0"

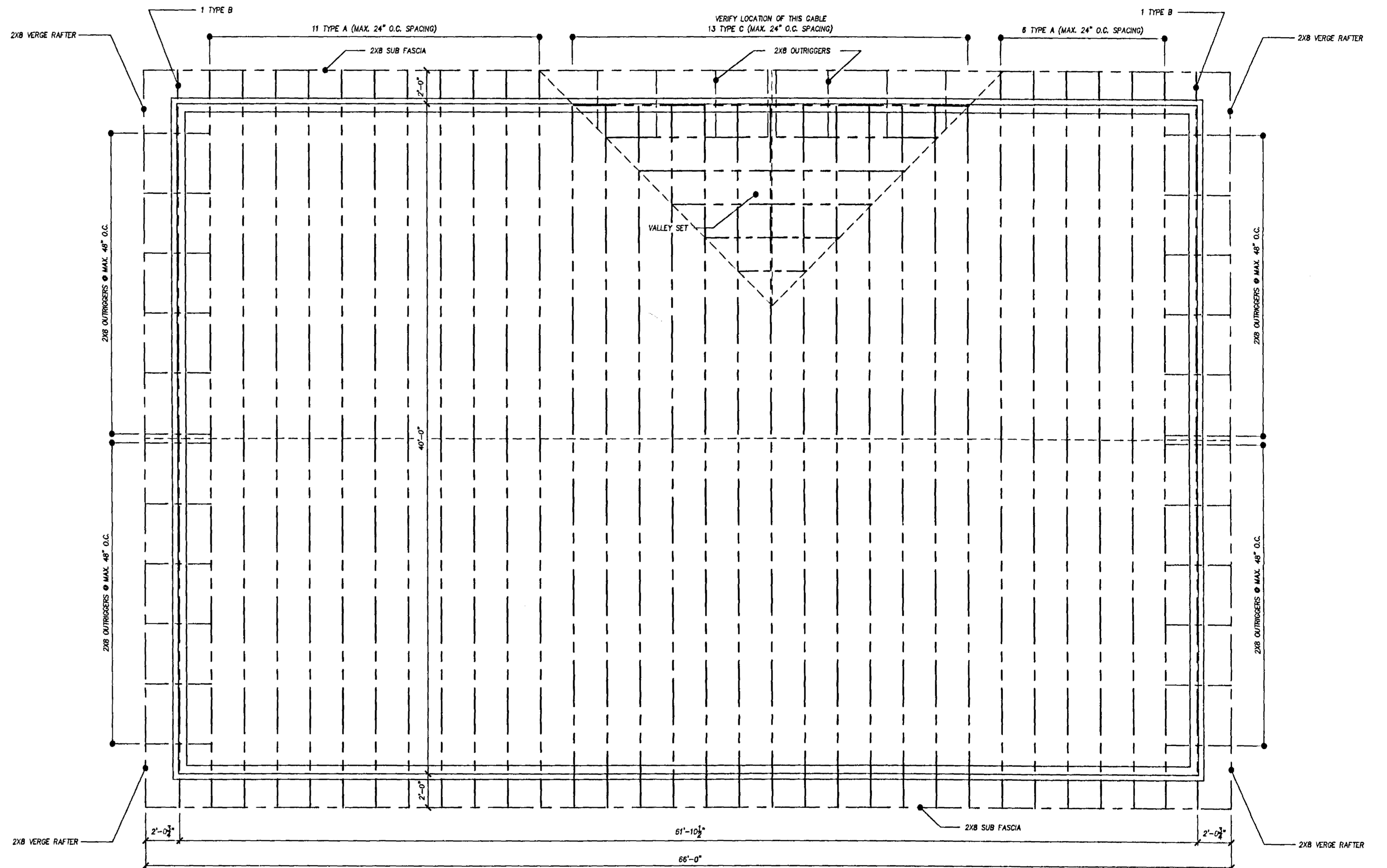


TRUSS "C"
1 / 4" = 1' - 0"



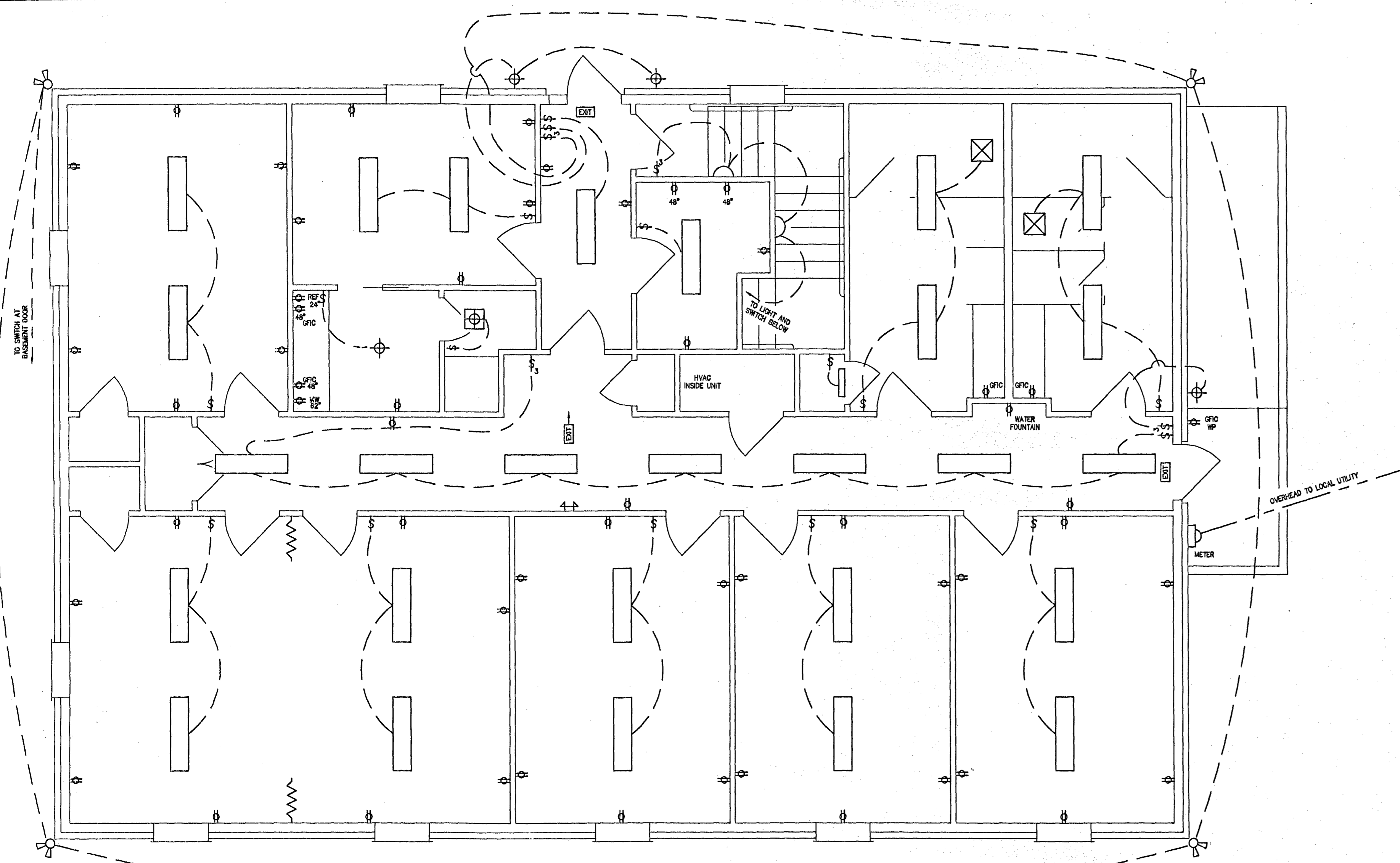
TRUSS "D"
1 / 4" = 1' - 0"

- ROOF TRUSS NOTES**
- MAXIMUM 24" O.C. SPACING.
 - 8/12 PITCH.
 - 24" CANTILEVER OVERHANG (1'-10 1/2" NET)
 - MIN. LOADING - 20+10+10 = 40 LBS/SQFT.
 - 90(40) WIND SPEED LOAD.
 - SUPPLIER TO DETERMINE LUMBER SIZE, GRADE, WEB PATTERN, PLATE SIZES, ETC. PER ENGINEERING SPECS.
 - BRACING PER T.I.P.I. AND MANUFACTURERS RECOMMENDATIONS.



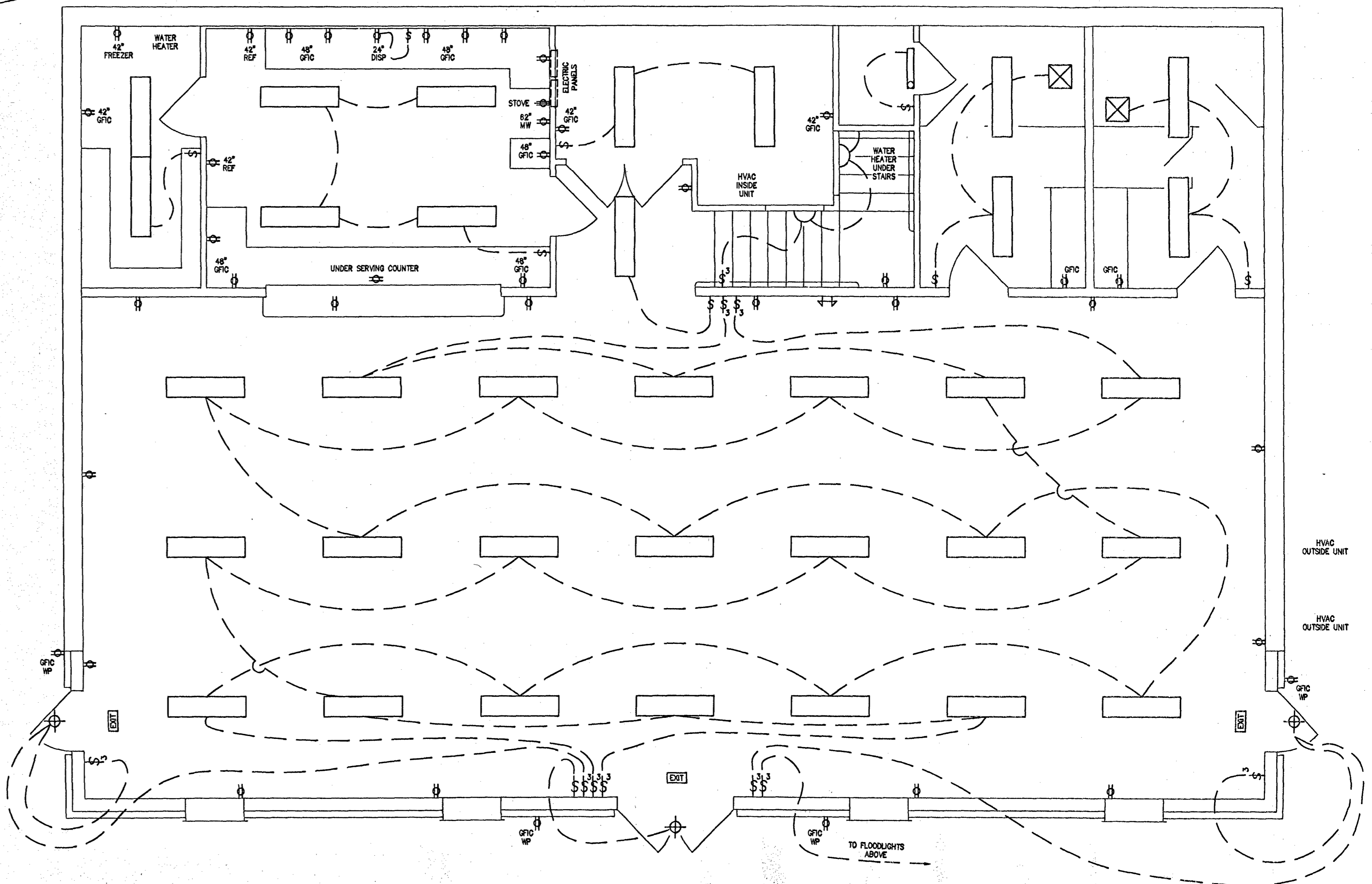
ROOF TRUSS PLAN
1 / 4" = 1' - 0"

ROOF TRUSSES							
QTY	MARK	SPAN	LENGTH	PITCH	OH	CANTILEVER	NOTE
17	A	40-0-0	43-9-0	6	0	1-10-8	COMMON TRUSS
2	B	40-0-0	T.B.D.	6	0	T.B.D.	DROPPED GABLE
13	C	30-10-0	41-8-8	6	0	1-10-8 FRT	STUB TRUSS
1	D	N/A	24-0-0	6	0	N/A	STUB DROPPED GABLE
1 (5 PCS)	E	N/A	T.B.D.	6	0	N/A	VALLEY SET



MAIN FLOOR ELECTRICAL
1/4" = 1' - 0"

BASEMENT ELECTRICAL
1/4" = 1' - 0"



SYMBOLS	
MARK	NOTE
\$	SINGLE POLE SWITCH
\$3	THREE WAY SWITCH
⊕	DUPLEX OUTLET
⊕	220 OUTLET
⊕	CEILING MOUNTED LIGHT FIXTURE
⊕	WALL MOUNTED LIGHT FIXTURE
⊕	COMBINATION LIGHT AND EXHAUST FAN FIXTURE
⊕	SOFFIT MOUNTED FLOOD LIGHTS
⊕	WALL MOUNTED SCONCE LIGHT FIXTURE
⊕	FLUSH MOUNTED FLUORESCENT FIXTURE
⊕	CLOSET FLUORESCENT FIXTURE
⊕	EXHAUST FAN VENT
⊕	SERVICE METER
⊕	BREAKER PANEL
⊕	GROUND FAULT INTERRUPTER CIRCUIT
WP	WATER PROOF
EXIT	EXIT SIGN W/BATTERY (ARROW SHOWS DIRECTION)
⊕	BATTERY BACKUP EMERGENCY LIGHTS

NOTE - VERIFY WITH LICENSED ELECTRICIAN BEFORE PRE-WIRING.